

I/O Control Unit



- ✓ Secure Lock Control
- ✓ 2-Relay Output Ports
- ✓ 2-isolated Input Ports
- ✓ Wiegand Interface
- ✓ RS-232 or RS-485 Host Interface
- ✓ RS-485 Slave Interface
- ✓ Emergency Exit Button
- ✓ 2 Status LEDs
- ✓ Optional Controller Features
- ✓ Network Enable

Applications

- ID/ ACCESS CONTROL SYSTEM
- Integration with CCTV, IBS
- Parking System
- Home Automation

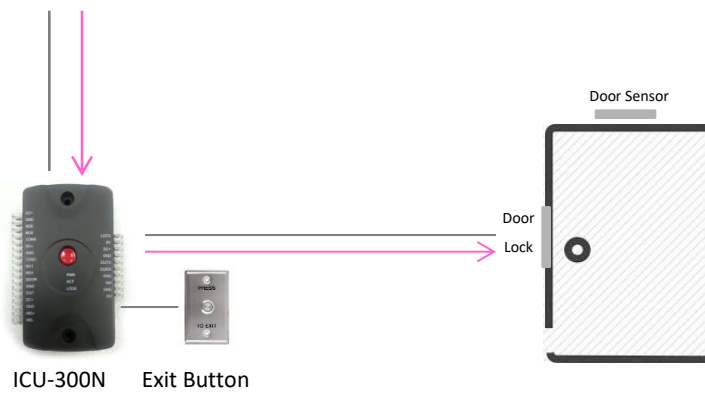
ICU 300N

SECURE I/O Control Unit

Configuration



ITOUCH pop / DE-950



Specification

CPU	Cortex 32-bit (1024KB Flash, 192KB SRAM)	
Power (Input)	DC 12V / 2A	
Power (Output)	DC 12V/1.5A, DC 5V/500mA	
Host Interface	2 port (RS-232 or RS-485 / Network)	
Reader Interface	3 ports (RS-485 / Wiegand / Optional RS-485 or Wiegand)	
INPUT	2 ports (Door sensor , Open SW)	
OUTPUT	(COM, NC, NO) x 2	Nominal switching capacity : 2A 30VDC Max. switching power : 60W, 125VA Max. switching voltage : 220VDC, 250VAC Max. carrying current : 3A
WIEGAND Interface	Wiegand Data Ports for Input & Output	
Dimension	60 X 103 X 11.5mm	
Operating Temperature	-10 ~ 60 °C	
Optional Features	RTC with battery, External Serial Flash(2MB)	

DUALi Inc. Headquarter

1-309. INNOPLEX,
#552 Wonchon-dong,
Youngtong-gu, Suwon,
Gyeonggi 443-380,
Korea

Tel : 82-31-213-0074
Fax : 82-31-213-0078
URL : www.duali.com

DUALi Inc. Sales Office

Tel : 82-070-4172-8585
Fax : 82-2-562-8589
E-mail : sales@duali.com